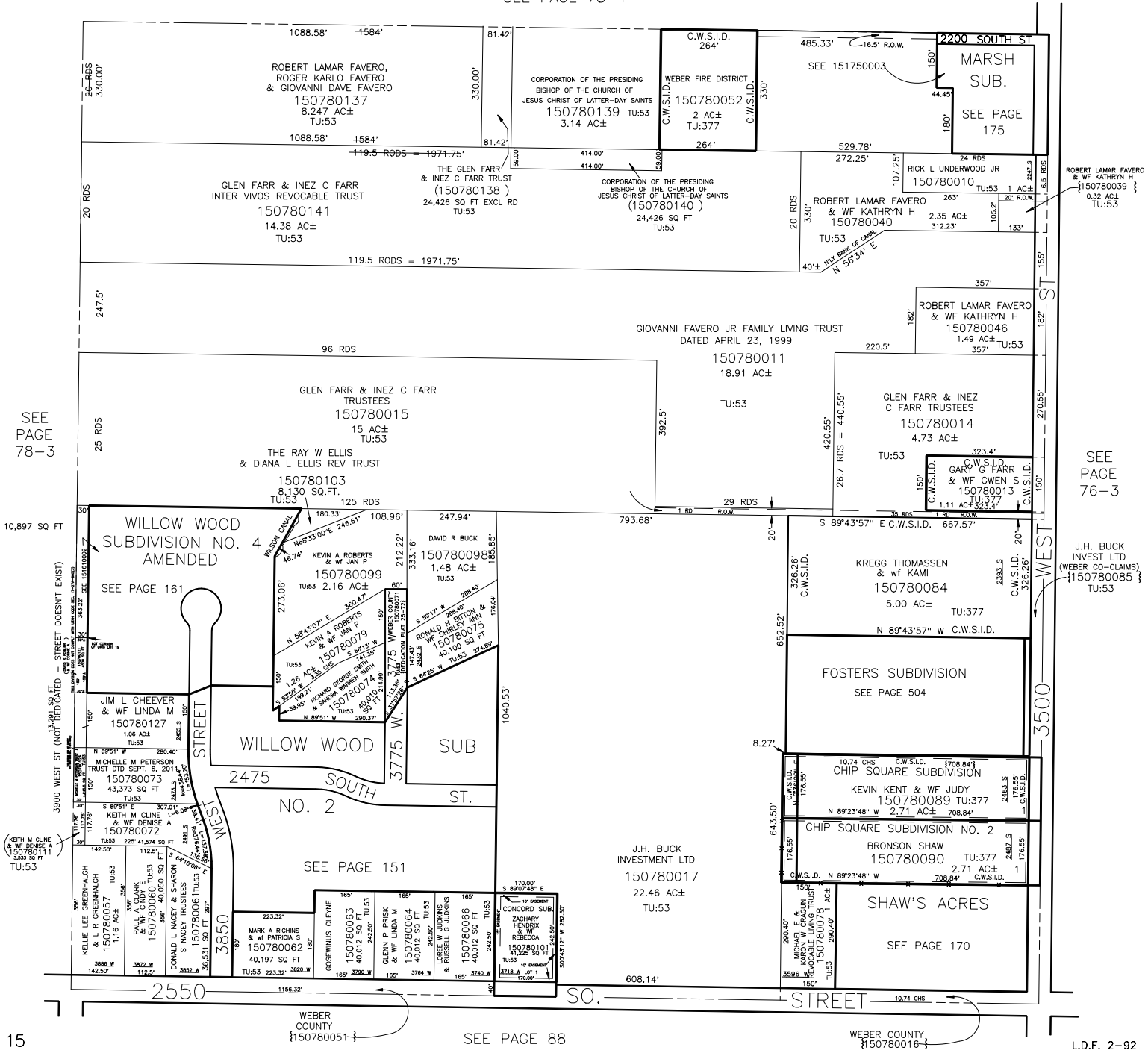


S.E. 1/4  
SECTION 28, T.6N., R.2W., S.L.B. & M.

IN WEBER COUNTY  
SCALE 1" = 200'

TAXING UNIT: 53, 377

SEE PAGE 78-1



SEE PAGE 78-3

SEE PAGE 76-3

10,897 SQ FT

3900 WEST ST (NOT DEDICATED - STREET DOESN'T EXIST)

KEITH M CLINE & WF DENISE A 150780111 TU:53

WEBER COUNTY {150780051}

SEE PAGE 88

WEBER COUNTY {150780016}